

## Al and AlCu terminals 16 - 1200 mm<sup>2</sup>

General information about Al and AlCu terminals.....	2
Aluminium terminals 16 - 1200 mm <sup>2</sup> .....	3
Aluminium through connectors with partition 16 - 1200 mm <sup>2</sup> .....	4
Through connectors with aluminium partitions with different areas 16 - 400 mm <sup>2</sup> .....	5
Aluminium through connectors with cable stop 300 - 400 mm <sup>2</sup> .....	5
Aluminium-copper terminals 16 - 1200 mm <sup>2</sup> .....	6
Aluminium-copper terminals 300 - 400 mm <sup>2</sup> .....	7
Aluminium-copper pin sockets 16 - 300 mm <sup>2</sup> .....	7
Through connectors of aluminium 16 - 95 mm <sup>2</sup> to solid copper 10 mm <sup>2</sup> .....	8
Through connectors of aluminium-copper 300 - 400 mm <sup>2</sup> .....	8
Aluminium-copper through connectors 16 - 400 mm <sup>2</sup> .....	9

# General information about Al and AlCu terminals



## System Elpress

System Elpress consists of terminals and tools that are designed and tested together to give a certified crimping result. This ensures that users will feel confident when using our systems, and that a secure connection is achieved through the proper handling of our products.

### Al terminals

Elpress terminals for Al cable are made of solid and pure aluminium 99.7%. We manufacture Al terminals type AK and AS, but also customised terminals or terminals larger than 1200 mm<sup>2</sup>.



Terminal type AK is used with Al conductors for connection to busbars and apparatus sockets.



Through connectors type AS are used when connecting aluminium-conductors.



Indent crimping of Elpress through connector using crimp head V250.

### AlCu terminals

Elpress bimetallic terminals (AlCu) are manufactured from solid material which is friction welded together, joining Aluminium with Copper. This is done when aluminium is rotated towards copper under pressure and it is the method that provides the best connection between Al and Cu.



Terminals of type AKK are used at the end of an Al conductor for connection to a Cu bus bar.



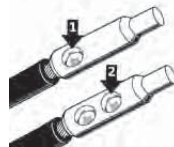
Through connectors of type AKS are used to connect Al conductors to Cu conductors.



Pin sockets type AKP are manufactured for connection of Al conductors to apparatus intended for copper pin connections.

### Number of crimps

The Elpress system is suitable for both stranded conductors, acc. to IEC 60228 class 2, and solid conductors, acc. to IEC60228 class 1. However, it should be noted that there is an area difference between stranded and solid Al conductors (see tables). When using sectoral Al-cable, a pre-rounding is normally required, which is done with a round crimping tool. When contact crimping Al terminals, two crimps should always be made. Note the crimp sequence.



### Customised products

Customised products are an important part of our work. Solving problems for the customer and at the same time manufacturing the products with profitability is a special challenge. This way, we also increase our knowledge of the customers' needs. The above terminals include different models of T-connectors where you can connect three conductors of the same size using only one terminal.



Upon request for variants in hole arrangement, the size of the connection flag and the like, we make variants of cable clips.

### Marking Al and AlCu terminals

Elpress system for marking Al and AlCu terminals states the conductor area (for small and solid conductors) and reference to rounded and contact crimp tools within the Elpress range. A tool reference for hexagonal crimping copper is given on the bimetallic through connectors.

#### TERMINALS:

Explanatory marking Al and AlCu terminals  
Barrel marking i.e. ALU300-R21-P36 (Elpress logotype) T2

ALU300 = Al conductor in mm<sup>2</sup>

R21 = size no. for punch and matrix for pre-rounding

P36 = size no. for punch and matrix for crimping

Palm marking: (Elpress logo) 16 = Screw dimension

#### THROUGH CONNECTORS:

Explanatory marking Al and AlCu terminals

For example: Cu240 - 30 (Elpress logotype)

Cu240 = Cu conductor in mm<sup>2</sup>

30 = Size no. for hexagonal die

For example: ALU300-R21-P36 (Elpress logotype) T2

ALU300 = Al conductor in mm<sup>2</sup>

R21 = size no. for punch and matrix for pre-rounding

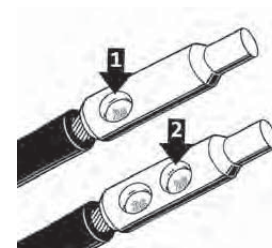
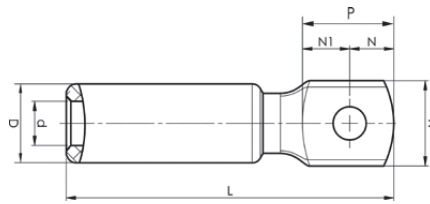
P36 = size no. for punch and matrix for crimping

### Clearance for holes in terminal palm

Screw size	Hole diameter (Ø mm)
M3	3,2
M4	4,3
M5	5,3
M6	6,4
M8	8,4
M10	10,5
M12	13
M16	17
M20	21
M24	26

# Aluminium terminals 16 - 1200 mm<sup>2</sup>

- Used for connecting Al conductors to Al busbar.
- Two crimps are needed - For crimp sequence, see image.



Crimp sequence

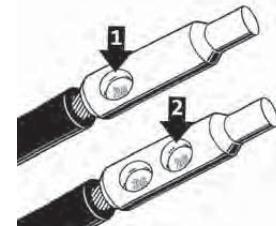
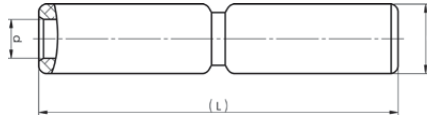
Stranded Al mm <sup>2</sup>	Solid Al mm <sup>2</sup>	AWG/ MCM	AWG Al (Solid Al)	Name	Screw	W mm	d	D	N	N1	P	L	t	s	Tool	Pcs/ pack
16	25	6	4	AK16-6	M6	16	5,9	13	8,5	9	17,5	61	5	29	V600, V1300, V250	48
16	25	6	4	AK16-8	M8	16	5,9	13	8,5	9	17,5	61	5	29	V600, V1300, V250	48
25	35	4	2	AK25-6	M6	16	6,8	13	8,5	9	17,5	61	5	29	V600, V1300, V250	48
25	35	4	2	AK25-8	M8	16	6,8	13	8,5	9	17,5	61	5	29	V600, V1300, V250	48
35	50	2	1/0	AK35-6	M6	22	8,5	20	11	14	25	85	7,5	45	V1300, V250	24
35	50	2	1/0	AK35-8	M8	22	8,5	20	11	14	25	85	7,5	45	V1300, V250	24
50	70	1/0	2/0	AK50-8	M8	22	9,6	20	11	14	25	85	7,5	45	V1300, V250	24
50	70	1/0	2/0	AK50-10	M10	22	9,6	20	11	14	25	85	7,5	45	V1300, V250	24
50	70	1/0	2/0	AK50-12	M12	27	9,6	20	14	15	29	90	6	45	V1300, V250	24
70	95	2/0	4/0	AK70-8	M8	22	11,3	20	11	14	25	85	7,5	45	V1300, V250	24
70	95	2/0	4/0	AK70-10	M10	22	11,3	20	11	14	25	85	7,5	45	V1300, V250	24
70	95	2/0	4/0	AK70-12	M12	27	11,3	20	14	15	29	90	6	45	V1300, V250	24
95	120	4/0	250	AK95-8	M8	27	12,5	25	14	15	29	104	10,5	60	V1300, V250	24
95	120	4/0	250	AK95-10	M10	27	12,5	25	14	15	29	104	10,5	60	V1300, V250	24
95	120	4/0	250	AK95-12	M12	27	12,5	25	14	15	29	104	10,5	60	V1300, V250	24
120	150	250	300	AK120-10	M10	27	14	25	14	15	29	104	10,5	60	V1300, V250	24
120	150	250	300	AK120-12	M12	27	14	25	14	15	29	104	10,5	60	V1300, V250	24
150	185	300	350	AK150-10	M10	27	15,8	25	14	15	29	104	10,5	60	V1300, V250	24
150	185	300	350	AK150-12	M12	27	15,8	25	14	15	29	104	10,5	60	V1300, V250	24
150	185	300	350	AK150-16	M16	35	15,8	25	21	23	44	119	8	60	V1300, V250	12
185	240	350	500	AK185-10	M10	35	17,6	32	16	18,5	34,5	113	13	61	V1300, V250	12
185	240	350	500	AK185-12	M12	35	17,6	32	16	18,5	34,5	113	13	61	V1300, V250	12
185	240	350	500	AK185-16	M16	35	17,6	32	16	18,5	34,5	113	13	61	V1300, V250	12
240		500		AK240-12	M12	35	19,8	32	16	18,5	34,5	113	13	61	V1300, V250	12
240		500		AK240-16	M16	35	19,8	32	16	18,5	34,5	113	13	61	V1300, V250	12
	300		600	AK300-12SOLID	M12	41	20	36	18	25	43	154	14	83	V250	6
	300		600	AK300-16SOLID	M16	41	20	36	18	25	43	154	14	83	V250	6
300		600		AK300-12	M12	41	22	36	18	25	43	154	14	83	V250	6
300		600		AK300-16	M16	41	22	36	18	25	43	154	14	83	V250	6
300		600		AK300-20	M20	41	22	36	20	23	43	154	15	83	V250	6
400		750		AK400-12	M12	41	25	40	18	25	43	155	15	83	V250	6
400		750		AK400-16	M16	41	25	40	18	25	43	155	15	83	V250	6
400		750		AK400-20	M20	41	25	40	20	23	43	155	15	83	V250	6
500		1000		AK500A-16	M16	55	28	52	26	29	55	225	20	110	V250	1
500		1000		AK500A-20	M20	55	28	52	26	29	55	225	20	110	V250	3
500		1000		AK500A-1		55	28	52			80	250	20	110	V250	3
500		1000		AK500A-2		70	28	52			80	250	16	110	V250	3
500		1000		AK500B-16	M16	44	28	44	22	22	44	174	16	83	V250	3
500		1000		AK500B-20	M20	44	28	44	22	22	44	174	16	83	V250	3
500		1000		AK500B-1		44	28	44			80	210	16	83	V250	3
500		1000		AK500B-2		70	28	44			80	210	16	83	V250	3
630		1250		AK630A-1		55	32	52			80	250	20	110	V250	3
630		1250		AK630A-2		70	32	52			80	250	16	110	V250	3
800		1600		AK800-1		60	36	60			80	267	20	129	V1470	1
800		1600		AK800-2		75	36	60			80	275	17	129	V1470	1
1000		2000		AK1000-1		60	40	60			80	267	20	129	V1470	1
1000		2000		AK1000-2		75	40	60			80	275	17	129	V1470	1
1200		2500		AK1200		75	44	70			80	291	17	142	V1470	1

t = palm thickness, s = strip length

05

# Aluminium through connectors with partition 16 - 1200 mm<sup>2</sup>

- Used primarily for connecting two Al conductors with the same area.
- Two plus two crimps are needed - For crimp sequence, see image.
- Partition in the middle to prevent fluid flow.



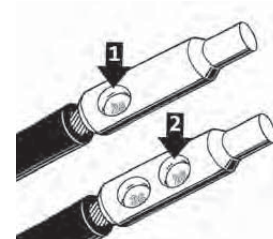
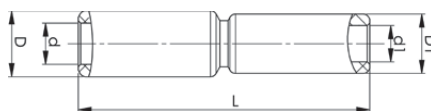
Crimp sequence

Stranded Al mm <sup>2</sup>	Solid Al mm <sup>2</sup>	AWG Al (Stranded Al)	AWG Al (Solid Al)	Name	d mm	D	L	s	Tool	Pcs/ pack
16-25		6-4		AS1625	6,2	11,5	35	18	V600	50
16	25	6	4	AS16	5,9	13	67	29	V600, V1300, V250	48
25	35	4	2	AS25	6,8	13	67	29	V600, V1300, V250	48
35	50	2	1/0	AS35	8,5	20	100	45	V1300, V250	24
50	70	1/0	2/0	AS50	9,6	20	100	42,5	V1300, V250	24
70	95	2/0	3/0	AS70	11,3	20	100	42,5	V1300, V250	24
95	120	3/0	250	AS95	12,5	25	130	57	V1300, V250	12
120	150	250	300	AS120	14	25	130	57	V1300, V250	12
150	185	300	350	AS150	15,8	25	130	58	V1300, V250	12
185	240	350	500	AS185	17,6	32	131	58	V1300, V250	9
240		500		AS240	19,8	32	131	58	V1300, V250	9
	300		600	AS300SOLID	20	36	177	83	V250	6
300		600		AS300	22	36	177	83	V250	3
400		750		AS400	25	40	179	83	V250	3
	400		750	AS400SOLID	23	40	179	83	V250	3
500		1000		AS500A	28	52	250	110	V250	3
500		1000		AS500B	28	44	184	83	V250	3
630		1250		AS630A-1	32	52	250	110	V250	1
630		1250		AS630A-2	34	52	250	110	V250	1
800		1600		AS800-1	36	60	288	129	V1470	1
1000		2000		AS1000-1	40	60	288	129	V1470	1
1200		2500		AS1200	44	70	320	142	V1470	1

For other combinations, please contact Elpress. s = strip length

# Through connectors with aluminium partitions with different areas 16 - 400 mm<sup>2</sup>

- Used for connecting Al conductors of different areas.
- Two plus two crimps are needed - crimp sequence see picture.
- With partition.



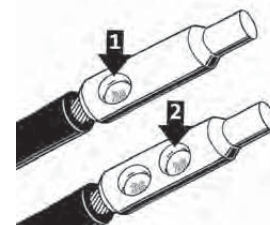
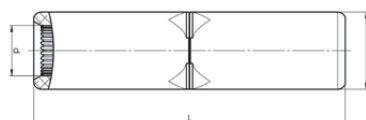
Crimp sequence

Stranded Al mm <sup>2</sup>	Solid Al mm <sup>2</sup>	AWG/MCM	AWG Al (Solid Al)	Name	d mm	d1	D	D1	L	s	s1	Tool	Pcs/pack
25-16	35-25	4-6	2-4	AS25-16	6,8	5,9	13	13	67	29	29	V1300, V250	48
35-25	50-35	2-4	1/0-4	AS35-25	8,5	6,8	20	13	85	45	29	V1300, V250	24
50-25	70-35	1/0-4	2/0-4	AS50-25	9,6	6,8	20	13	85	45	29	V1300, V250	24
50-35	70-50	1/0-2	2/0	AS50-35	9,6	8,5	20	20	100	45	45	V1300, V250	24
70-50	95-70	2/0-1/0	4/0-2/0	AS70-50	11,3	9,6	20	20	100	45	45	V1300, V250	24
95-25	120-35	4/0-4	2-250	AS95-25	12,5	6,8	25	13	101,1	60	29	V1300, V250	24
95-35	120-50	4/0-2	1/0-250	AS95-35	12,5	8,5	25	20	116	60	45	V1300, V250	24
95-50	120-70	3/0-1/0	250-2/0	AS95-50	12,5	9,6	25	20	116,1	60	45	V1300, V250	24
95-70	120-95	4/0-2/0	250-4/0	AS95-70	12,5	11,3	25	20	116,1	60	45	V1300, V250	24
120-95	150-120	250-4/0	300-250	AS120-95	14	12,5	25	25	130	60	60	V1300, V250	12
150-50	185-70	250-1/0	350-2/0	AS150-50	15,8	9,6	25	20	116,1	60	45	V1300, V250	12
150-70	185-95	300-2/0	350-3/0	AS150-70	15,8	11,3	25	20	116,1	60	45	V1300, V250	24
150-95	185-120	300-4/0	350-250	AS150-95	15,8	12,5	25	25	130	60	60	V1300, V250	12
150-120	185-150	300-250	350-300	AS150-120	15,8	14	25	25	130	60	60	V1300, V250	12
185-95	240-120	350-4/0	500-250	AS185-95	17,6	12,5	32	25	131,9	61	60	V1300, V250	12
185-150	240-185	350-300	500-350	AS185-150	17,6	15,8	32	25	131,9	61	60	V1300, V250	12
240-95	120	500-4/0	600-250	AS240-95	19,8	12,5	32	25	132	61	60	V1300, V250	12
240-120	150	500-250	300	AS240-120	19,8	14	32	25	132	61	60	V1300, V250	12
240-150	185	500-300	350	AS240-150	19,8	15,8	32	25	132	61	60	V1300, V250	12
240-185	240	500-350	500	AS240-185	19,8	17,6	32	32	131	61	61	V1300, V250	12
300-240		600-500		AS300-240	22	19,8	36	32	155,1	83	61	V250	6
400-300		750-600		AS400-300	25	22	40	36	179	83	83	V250	3

s, s1 = insulation stripping length

# Aluminium through connectors with cable stop 300 - 400 mm<sup>2</sup>

- Used primarily for connecting two Al conductors with the same area
- For the indent crimping of Al-terminals, two crimps are always required, see image.



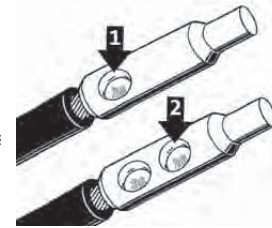
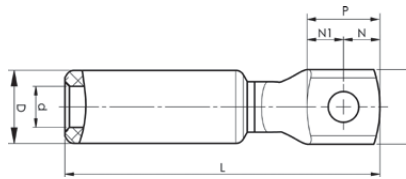
Crimp sequence

Stranded Al mm <sup>2</sup>	AWG/MCM	Name	d mm	D	L	s	Tool	Pcs/pack
300	600	AS300B	22,5	37	150	65	V1300, V250	1
400	750	AS400B	25	37	150	64	V1300, V250	1

s = strip length

# Aluminium-copper terminals 16 - 1200 mm<sup>2</sup>

- Used for connection of Al conductors for apparatus outlets and busbars of Cu.
- Two crimps are needed - For crimp sequence, see image.



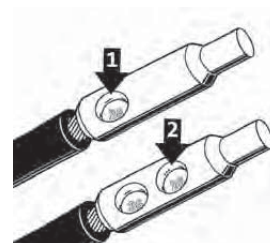
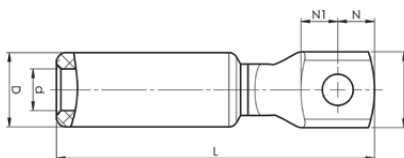
Crimp sequence

Stranded Al mm <sup>2</sup>	Solid Al mm <sup>2</sup>	AWG/ MCM	AWG Al (Solid Al)	Name	Screw	W mm	d	D	N	N1	P	L	t	s	Tool	Pcs/ pack
16	25 (16)	6	4	AKK16-8	M8	16	5,9	13	8,5	10	18,5	66	3	29	V600, V1300, V250	48
25	35	4	2	AKK25-8	M8	16	6,8	13	8,5	10	18,5	66	3	29	V600, V1300, V250	48
25	35	4	2	AKK25-12	M12	22	6,8	13	11,5	15,5	27	75	4	29	V600, V1300, V250	24
35	50	2	1/0	AKK35-8	M8	25	8,5	20	12,5	12,5	25	89	5,8	45	V1300, V250	24
35	50	2	1/0	AKK35-12	M12	25	8,5	20	12,5	12,5	25	89	5,8	45	V1300, V250	24
50	70	1/0	2/0	AKK50-8	M8	25	9,6	20	12,5	12,5	25	89	5,8	45	V1300, V250	24
50	70	1/0	2/0	AKK50-10	M10	25	9,6	20	12,5	12,5	25	89	5,8	45	V1300, V250	24
50	70	1/0	2/0	AKK50-12	M12	25	9,6	20	12,5	12,5	25	89	5,8	45	V1300, V250	24
70	95	2/0	4/0	AKK70-8	M8	25	11,3	20	12,5	12,5	25	89	5,8	45	V1300, V250	24
70	95	2/0	4/0	AKK70-10	M10	25	11,3	20	12,5	12,5	25	89	5,8	45	V1300, V250	24
70	95	2/0	4/0	AKK70-12	M12	25	11,3	20	12,5	12,5	25	89	5,8	45	V1300, V250	24
95	120	4/0	250	AKK95-8	M8	25,5	12,5	25	12,5	12,5	25	108	5,7	60	V1300, V250	12
95	120	4/0	250	AKK95-10	M10	25,5	12,5	25	12,5	12,5	25	108	5,7	60	V1300, V250	12
95	120	4/0	250	AKK95-12	M12	25,5	12,5	25	12,5	12,5	25	108	5,7	60	V1300, V250	12
95	120	4/0	250	AKK95-16	M16	30	12,5	25	15	15	30	115	6,5	60	V1300, V250	12
120	150	250	300	AKK120-10	M10	25,5	14	25	12,5	12,5	25	108	5,7	60	V1300, V250	12
120	150	250	300	AKK120-12	M12	25,5	14	25	12,5	12,5	25	108	5,7	60	V1300, V250	12
120	150	250	300	AKK120-16	M16	30	14	25	15	15	30	115	6,5	60	V1300, V250	12
150	185	300	350	AKK150-10	M10	25,5	15,8	25	12,5	12,5	25	108	5,7	60	V1300, V250	12
150	185	300	350	AKK150-12	M12	25,5	15,8	25	12,5	12,5	25	108	5,7	60	V1300, V250	12
150	185	300	350	AKK150-16	M16	30	15,8	25	15	15	30	115	6,5	60	V1300, V250	12
185	240	350	500	AKK185-10	M10	30	17,6	32	15	15	30	116	6,5	60	V1300, V250	12
185	240	350	500	AKK185-12	M12	30	17,6	32	15	15	30	116	6,5	60	V1300, V250	12
185	240	350	500	AKK185-16	M16	30	17,6	32	15	15	30	116	6,5	60	V1300, V250	12
240		500		AKK240-10	M10	30	19,8	32	15	15	30	116	6,5	61	V1300, V250	12
240		500		AKK240-12	M12	30	19,8	32	15	15	30	116	6,5	61	V1300, V250	12
240		500		AKK240-16	M16	30	19,8	32	15	15	30	116	6,5	61	V1300, V250	12
300		600		AKK300-12	M12	37	22	36	18,5	18,5	37	154	6,5	82	V250	6
300		600		AKK300-16	M16	37	22	36	18,5	18,5	37	154	6,5	82	V250	6
300		600		AKK300-20	M20	37	22	36	18,5	18,5	37	154	6,5	82	V250	6
	300		600	AKK300-12SOLID	M12	37	20	36	18,5	18,5	37	154	6,5	82	V250	6
	300		600	AKK300-16SOLID	M16	37	20	36	18,5	18,5	37	154	6,5	82	V250	6
	300		600	AKK300-20SOLID	M20	37	20	36	18,5	18,5	37	154	6,5	82	V250	6
400		750		AKK400-12	M12	37	25	40	18,5	18,5	37	155	6,5	83	V250	6
400		750		AKK400-16	M16	37	25	40	18,5	18,5	37	155	6,5	83	V250	6
400		750		AKK400-20	M20	37	25	40	18,5	18,5	37	155	6,5	83	V250	6
500		1000		AKK500A-16	M16	48	28	52	26	29	55	222	9,5	110	V250	3
500		1000		AKK500A-20	M20	48	28	52	26	29	55	222	9,5	110	V250	3
500		1000		AKK500A-1		48	28	52			70	237	9,5	110	V250	3
500		1000		AKK500A-2		70	28	52			70	240	12	110	V250	3
500		1000		AKK500B-16	M16	42	28	44	21	21	42	174	10	83	V250	3
500		1000		AKK500B-20	M20	42	28	44	21	21	42	174	10	83	V250	3
500		1000		AKK500B-1		42	28	44			70	202	10	83	V250	3
500		1000		AKK500B-2		70	28	44			70	211	12	83	V250	3
630		1250		AKK630A-1		48	32	52			70	237	9,5	110	V250	3
630		1250		AKK630A-2		70	32	52			70	240	12	110	V250	3
800		1600		AKK800-1		62	36	60			70	263	12	129	V1470	1
800		1600		AKK800-2		75	36	60			75	275	17	129	V1470	1
1000		2000		AKK1000-1		62	40	60			70	263	12	129	V1470	1
1000		2000		AKK1000-1-16	M16	62	40	60	30	40	70	263	12	129	V1470	1
1000		2000		AKK1000-2		75	40	60			75	275	17	129	V1470	1
1200		2500		AKK1200		75	44	70			75	310	17	142	V1470	1

s = strip length, t = palm thickness

## Aluminium-copper terminals 300 - 400 mm<sup>2</sup>

- Used for connection of Al conductors for apparatus outlets and busbars of Cu, etc.
- For stranded wire Al conductor.
- Two crimps are needed, see image.



Crimp sequence

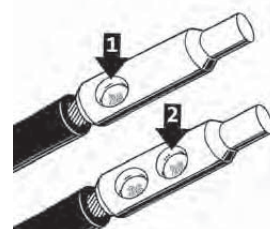
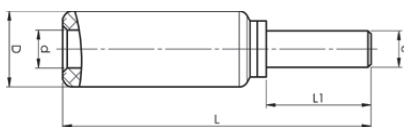
Stranded Al mm <sup>2</sup>	AWG/MCM	Name	Screw	W mm	d	D	N	N1	L	t	s	Tool	Pcs/pack
300	600	AKK300B-12	M12	37	22,3	37	18,5	18,5	139	6,7	68	V1300, V250	6
300	600	AKK300B-16	M16	37	22,3	37	18,5	18,5	139	6,7	68	V1300, V250	6
400	750	AKK400B-12	M12	37	25	37	18,5	18,5	139	6,7	68	V1300, V250	6
400	750	AKK400B-16	M16	37	25	37	18,5	18,5	139	6,7	68	V1300, V250	6

t = palm thickness, s = strip length

05

## Aluminium-copper pin sockets 16 - 300 mm<sup>2</sup>

- Used for connection of Al conductors to apparatus with copper connectors.
- Two crimps are needed - For crimp sequence, see image.



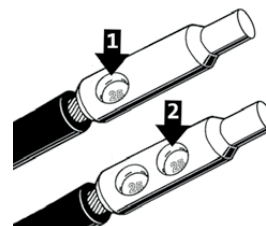
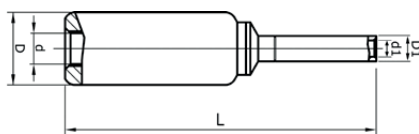
Crimp sequence

Stranded Al mm <sup>2</sup>	Solid Al mm <sup>2</sup>	AWG/MCM	AWG Al (Solid Al)	Name	d mm	D	e	L	L1	s	Tool	Pcs/pack
16	25 (16)	6	4	AKP16	5,9	13	6	56	25	29	V600, V1300, V250	48
25	35	4	2	AKP25	6,8	13	6	56	25	29	V600, V1300, V250	48
35	50	2	1/0	AKP35	8,5	20	9	78	25	45	V1300, V250	24
50	70	1/0	2/0	AKP50	9,6	20	9	88	35	45	V1300, V250	24
70	95	2/0	4/0	AKP70	11,3	20	9	88	35	45	V1300, V250	24
95	120	4/0	250	AKP95	12,5	25	12	103	35	60	V1300, V250	24
120	150	250	300	AKP120	14	25	12	108	40	60	V1300, V250	24
150	185	300	350	AKP150	15,8	25	12	108	40	60	V1300, V250	24
185	240	350	500	AKP185	17,6	32	14	113,5	45	61	V1300, V250	12
240		500		AKP240	19,8	32	14	113,5	45	61	V1300, V250	12
300		600		AKP300	22	36	16	142	50	83	V250	9

s = strip length

## Through connectors of aluminium 16 - 95 mm<sup>2</sup> to solid copper 10 mm<sup>2</sup>

- Used for connecting stranded Al conductors to solid Cu conductors 10 mm<sup>2</sup>/8 AWG (e.g. Excel, Excelett).
- Two crimps are needed for both Al (crimp sequence see image) and Cu.



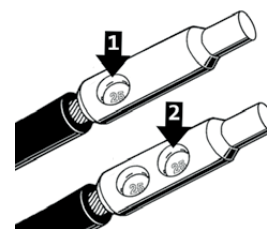
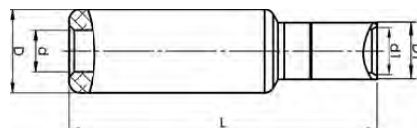
Crimp sequence

Stranded Al mm <sup>2</sup>	Solid Al mm <sup>2</sup>	mm <sup>2</sup>	AWG	AWG Al (Solid Al)	Name	d	d1	D	D1	L	s	s1	Tool	Pcs/pack
16	25	10	6	4	AKS16-10S	5,9	4,5	13	7	64,5	29	33	V600, V1300, V250	48
25	35	10	4	2	AKS25-10S	6,8	4,5	13	7	64,5	29	33	V600, V1300, V250	48
35	50	10	2	1/0	AKS35-10S	8,5	4,5	20	7	86	45	33	V1300, V250	48
50	70	10	1/0	2/0	AKS50-10S	9,6	4,5	20	7	86	45	33	V1300, V250	24
70	95	10	2/0	4/0	AKS70-10S	11,3	4,5	20	7	86	45	33	V1300, V250	24
95	120	10	4/0	250	AKS95-10S	12,5	4,5	25	7	101	60	33	V1300, V250	24

s = strip length (Al), s1 = strip length (Cu)

## Through connectors of aluminium-copper 300 - 400 mm<sup>2</sup>

- Used for connecting Al conductors and Cu conductors
- Stranded/solid Al conductors, stranded/flexible Cu conductors. For multi-stranded Cu conductors, contact crimping using the DUAL system is recommended.
- Two crimps are needed for Al (see image).
- When crimping the Al part, use matrix P2537M and punch P2537D, no matrix holder is needed.
- When crimping the Cu part, place the dies between the marking on the sleeve and the edge of the Cu part.



Crimp sequence

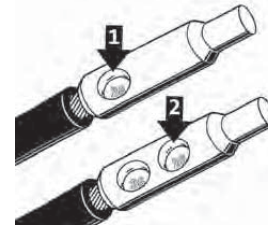
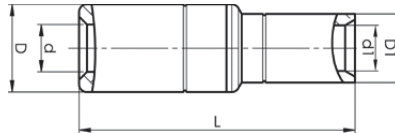
Stranded Al mm <sup>2</sup>	mm <sup>2</sup> (Cu)	AWG Al (Stranded)	AWG Cu	Name	d	d1	D	D1	L	s	s1	Tool	Pcs/pack
300	185	600	350	AKS300B-185	22,3	21	37	27	126,5	68	40	DV1300, DV250	6
300	240	600	500	AKS300B-240A	22,3	22,5	37	29	126,5	68	40	DV1300, DV250	6
400	240	750	500	AKS400B-240A	25	22,5	37	29	126,5	68	40	DV1300, DV250	6
400	300	750	600	AKS400B-300A	25	24,5	37	31,5	127	68	40	DV1300, DV250	6

If class 5 Cu conductors are used, use the corresponding DUAL tool for (D)V1300 or (D)V250., s = strip length (Al), s1 = strip length (Cu)



# Aluminium-copper through connectors 16 - 400 mm<sup>2</sup>

- Connector from Al conductor to Cu conductor.
- Stranded/solid Al conductors, stranded/multi-stranded Cu conductors.
- For multi-stranded Cu conductors, contact crimping using the DUAL system is recommended.
- Two crimps are required for Al (see image) normally one for Cu.
- When hexagonally crimping the Cu part, the dies are placed between the marking groove and the outer edge.



Crimp sequence

Stranded Al mm <sup>2</sup>	Solid Al mm <sup>2</sup>	Cu mm <sup>2</sup>	AWG/MCM	AWG Al (Solid Al)	AWG Cu (AlCu)	Name	d	d1	D	D1	L	s	s1	Tool	Pcs/pack
16-25		10-16	6-4		8-6	AKS1625-1016	6,2	6	8,3	7,5	36,5	19	17	V600	48
16	25 (16)	10	6	4	8	AKS16-10	5,9	5	13	8	45,5	29	14	V600, DV1300, DV250	48
25	35	10	4	2	8	AKS25-10	6,8	5	13	8	45,5	29	14	V600, DV1300, DV250	48
25	35	16	4	2	6	AKS25-16	6,8	6	13	9	45,5	29	15	V600, DV1300, DV250	48
35	50	10	2	1/0	8	AKS35-10	8,5	5	20	8	66	45	14	DV1300, DV250	24
35	50	16	2	1/0	6	AKS35-16	8,5	6	20	13	66	45	15	DV1300, DV250	24
35	50	25	2	1/0	4	AKS35-25	8,5	8	20	13	69	45	17	DV1300, DV250	24
50	70	10	1/0	2/0	8	AKS50-10	9,6	5	20	13	66	45	14	DV1300, DV250	24
50	70	16	1/0	2/0	6	AKS50-16	9,6	6	20	13	66	45	15	DV1300, DV250	24
50	70	25	1/0	2/0	4	AKS50-25	9,6	8	20	13	69	45	17	DV1300, DV250	24
50	70	35	1/0	2/0	2	AKS50-35	9,6	9	20	13	71	45	19	DV1300, DV250	24
50	70	50	1/0	2/0	1/0	AKS50-50	9,6	11	20	14,5	75,5	45	23	DV1300, DV250	24
70	95	35	2/0	4/0	2	AKS70-35	11,3	9	20	13	71	45	19	DV1300, DV250	24
70	95	50	2/0	4/0	1/0	AKS70-50	11,3	11	20	14,5	75,5	45	23	DV1300, DV250	24
70	95	70	2/0	4/0	2/0	AKS70-70	11,3	13	20	17	78	45	25	DV1300, DV250	24
95	120	10	4/0	250	8	AKS95-10	12,5	5	25	17	81	60	14	DV1300, DV250	24
95	120	16	4/0	250	6	AKS95-16	12,5	6	25	17	81	60	15	DV1300, DV250	24
95	120	25	4/0	250	4	AKS95-25	12,5	8	25	17	84	60	17	DV1300, DV250	24
95	120	35	4/0	250	2	AKS95-35	12,5	9	25	17	86	60	19	DV1300, DV250	24
95	120	50	4/0	250	1/0	AKS95-50	12,5	11	25	17	90,5	60	23	DV1300, DV250	24
95	120	70	4/0	250	2/0	AKS95-70	12,5	13	25	17	93	60	25	DV1300, DV250	24
95	120	95	4/0	250	4/0	AKS95-95	12,5	15	25	20	93,5	60	25	DV1300, DV250	24
120	150	50	250	300	1/0	AKS120-50	14	11	25	17	90,5	60	23	DV1300, DV250	24
120	150	70	250	300	2/0	AKS120-70	14	13	25	17	93	60	25	DV1300, DV250	24
120	150	95	250	300	4/0	AKS120-95	14	15	25	20	93,5	60	25	DV1300, DV250	24
120	150	120	250	300	250	AKS120-120	14	17	25	22	103,5	60	30	DV1300, DV250	24
150	185	25	300	350	4	AKS150-25	15,8	8	25	17	84	60	17	DV1300, DV250	24
150	185	35	300	350	2	AKS150-35	15,8	9	25	17	86	60	19	DV1300, DV250	24
150	185	50	300	350	1/0	AKS150-50	15,8	11	25	17	90,5	60	23	DV1300, DV250	24
150	185	70	300	350	2/0	AKS150-70	15,8	13	25	17	93	60	25	DV1300, DV250	24
150	185	95	300	350	4/0	AKS150-95	15,8	15	25	20	93,5	60	25	DV1300, DV250	24
150	185	120	300	350	250	AKS150-120	15,8	17	25	22	103,5	60	30	DV1300, DV250	24
150	185	150	300	350	300	AKS150-150	15,8	19	25	25	99	60	30	DV1300, DV250	24
185	240	70	350	500	2/0	AKS185-70	17,6	13	32	17	93,5	61	25	DV1300, DV250	12
185	240	95	350	500	4/0	AKS185-95	17,6	15	32	20	94	61	25	DV1300, DV250	12
185	240	120	350	500	250	AKS185-120	17,6	17	32	22	104	60	30	DV1300, DV250	12
185	240	150	350	500	300	AKS185-150	17,6	19	32	25	99,5	61	30	DV1300, DV250	12
185	240	185	350	500	350	AKS185-185	17,6	21	32	27	100	61	30	DV1300, DV250	12
240	35	500			2	AKS240-35	19,8	9	32	17	86,5	61	19	DV1300, DV250	12
240	50	500			1/0	AKS240-50	19,8	11	32	17	91	61	23	DV1300, DV250	12
240	70	500			2/0	AKS240-70	19,8	13	32	17	93,5	61	25	DV1300, DV250	12
240	95	500			4/0	AKS240-95	19,8	15	32	20	93,5	61	25	DV1300, DV250	12
240	120	500			250	AKS240-120	19,8	17	32	22	104	60	30	DV1300, DV250	12
240	150	500			300	AKS240-150	19,8	19	32	25	99,5	60	30	DV1300, DV250	12
240	185	500			350	AKS240-185	19,8	21	32	27	100	61	30	DV1300, DV250	12
240	240	500			500	AKS240-240A	19,8	22,5	32	29	100	61	30	DV1300, DV250	12
300	150	600			300	AKS300-150	22	19	36	25	122,5	83	30	DV250	9
300	185	600			350	AKS300-185	22	21	36	27	123	83	30	DV250	9
300	240	600			500	AKS300-240A	22	22,5	36	29	123,5	83	30	DV250	9
	300	300		600	600	AKS300SOLID-300	20	26	36	32	124	83	30	DV250	6
400	150	750			300	AKS400-150	25	19	40	25	124	83	30	DV250	6
400	185	750			350	AKS400-185	25	21	40	27	124	83	30	DV250	6
400	240	750			500	AKS400-240A	25	22,5	40	29	124	83	30	DV250	6
400	300	750			600	AKS400-300A	25	24,5	40	31,5	125	83	30	DV250	6

s = strip length (Al), s1 = strip length (Cu)

05