



etech  
components

SPECIALIST CABLE ACCESSORY DISTRIBUTOR



## Cable Cleats | Cable Clamps

E-Tech Components can specify a huge range of **Cable Cleats & Cable Clamps** made from Nylon, Aluminium and Stainless steel: Fire Resistant, Single Way, Trefoil Cable Cleats, Quad Cleats, Cable Blocks/Transits and Accessories.

We also offer Bespoke Solutions designed and manufactured according to your requirements.

**Prysmian**  
Group

**BI CON**

**Dutchclamp®**



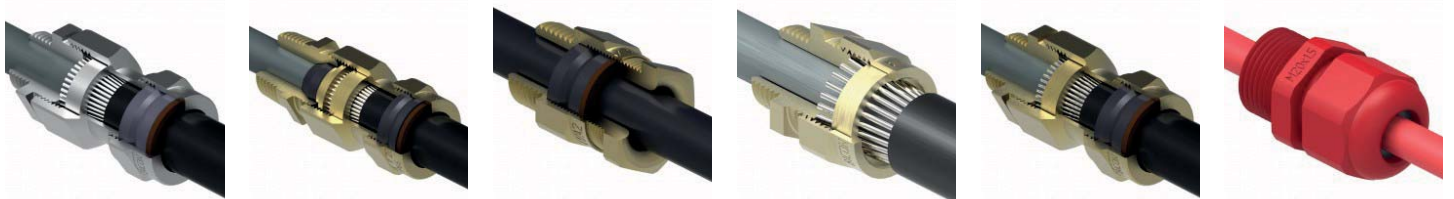
## Cable Glands | Cable Gland Kits

**Cable Glands & Cable Gland Kits** made from brass, aluminium and nylon, used to terminate all types of armoured, braided, lead-sheathed and unarmoured cable. Suitable for industrial and hazardous locations, as well as high voltage installations. Fire Performance, Low Smoke Zero Halogen (LSOH), Submersible and High Fault Current Rated Cable Glands available.

**Prysmian**  
Group

**BI CON**

**CCG®**  
CABLE TERMINATIONS



## Cable Crimps | Cable Lugs | Connectors

Compression and Mechanical **Cable Lugs, Terminals and Connectors** for all conductors and voltages. Manufactured from pure Aluminium (Al), electrolytic Copper (Cu), pre-insulated, un-insulated, end terminals and other types in a vast variety of sizes and colours.

**EIPRESS**

**Prysmian**  
Group

**BI CON**



Special Solutions & Customer Specials Available!



CONTACT US WITH YOUR REQUIREMENTS  
t: +44 (0)1744 762 929  
e: sales@etechcomponents.com

# Low Voltage LV | Medium Voltage MV | Cable Joints

Heat shrink, Cold shrink, Resin and Push-on Cable Joints to suit single and 3-core XLPE, EPR, PVC and PILC cables. Industrial, Universal, Afumex LSOH, Fire Performance, Hydrocarbon Resistant, Heatshrink and Elaseped Cable Joints are available as part of our **Low and Medium Voltage Cable Joint Kits**.

**Prysmian**  
Group

**BI**CON

**N**exans



## Compounds | Resins

**Resins** for Cable Termination, Development and Repairs and **Compounds** used to prevent galvanic corrosion, enhance connections in electrical joints and prevent contaminants from influencing the connection. This range includes Electrical Weatherproof and Joint Inhibitor Compounds, Hot Pour Compounds, Coraline Soldering Paste, Cold Pour Resins, LDPU (Low Density Polyurethane) Resins and more.

**Prysmian**  
Group

**BI**CON



## Cable Ducting | Cable Troughing

Extremely lightweight underground Cable Ducting & Troughing Systems, suitable for a wide range of subterranean multi-rack cable applications. Both systems consist of versatile cable routing solutions, used for the management and protection of cables. A wide range of combinations, alternatives and accessories are available that can make any cable raceway possible. Suitable for construction projects, railways, power plants, urban development and more.

**FURUKAWA**  
ELECTRIC GROUP

**EFLEX SQUARE**

**GREEN TROUGH**

**TTS**  
Trough-Tec Systems



## Cable Identification | Cable Markers | Labels

**Cable Markers & Labels:** Silverfox's Thermal Printer Kit and Software for the production of multiple label products, as well as a big range of Pre-Printed Labels and Labelling Solutions for use on Cables/ Wires, Pipes and Equipment in a wide range of industrial environments.

**SILVER FOX**  
Exceptional Labelling - No Hassle



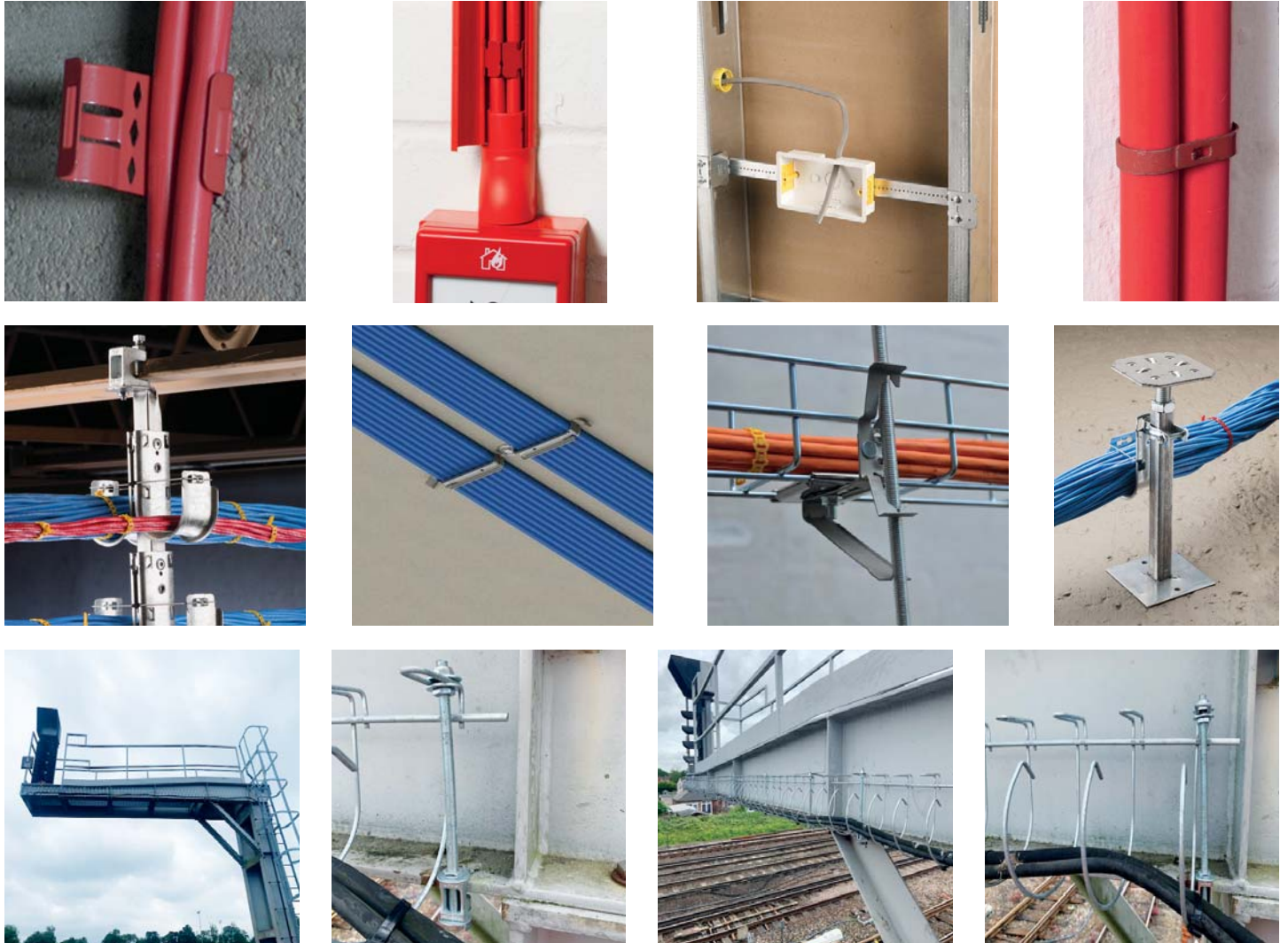
**etech**  
components

All Enquiries: tel: +44 (0)1744 762 929 | email: [sales@etechcomponents.com](mailto:sales@etechcomponents.com) | web: [www.etechcomponents.com](http://www.etechcomponents.com)

Technical data subject to change without notice! - The information is made available on the understanding that E-Tech Components (UK) Ltd and its employees and agents shall have no liability (including liability by reason of negligence) to the users for any loss, damage, cost or expense incurred or arising by reason of any person using or relying on the information and whether caused by reason of any error, negligent act, omission or misrepresentation in the information or otherwise.

# Cable Management

**Cable Management** Solutions within this range include: 1) Electrical & Fastening Solutions suitable for electrical installation, datacom, telecom, fire protection, seismic and HVAC applications, 2) Innovative Trailing Cable Solutions designed to raise cables and leads off the floor and reduce accidents in the workplace, 3) Fire Rated Fixings & Clips with technical features and installer benefits that deliver outstanding value and quality.



# Cable Protection

**Cable Protection** Solutions is a broad range of Standard and 2-piece Corrugated Conduits, Metal Conduits, smooth Plastic Conduits and other special solutions. This range also includes Fittings & Accessories like Sleeves, Connectors & more.



All Enquiries: tel: +44 (0)1744 762 929 | email: [sales@etechcomponents.com](mailto:sales@etechcomponents.com) | web: [www.etechcomponents.com](http://www.etechcomponents.com)

Technical data subject to change without notice! - The information is made available on the understanding that E-Tech Components (UK) Ltd and its employees and agents shall have no liability (including liability by reason of negligence) to the users for any loss, damage, cost or expense incurred or arising by reason of any person using or relying on the information and whether caused by reason of any error, negligent act, omission or misrepresentation in the information or otherwise.

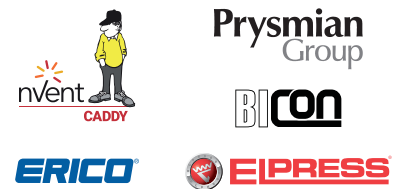
# Tools

This section consists of a huge range of High Quality Hand Tools and Battery Operated Tools, designed for Crimping, Cutting, Stripping & Cable Preparation. Also includes Die Sets, Pumps and other accessories for crimping, Storage, Carry and Assortment Boxes, Crimp Stations & Software.



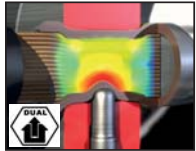
# Earthing | Lightning Protection

An **Earthing** system or grounding system connects specific parts of that installation with the Earth's conductive surface for safety and functional purposes. Our Earthing System consists of five parts: Hardened Steel Tip, Leading Rod, Extensions Rods, Driving Studs or Sleeves, Earthing Wire (supplied by wholesalers) and also the Power Hammer required to drive down studs (or sleeves).



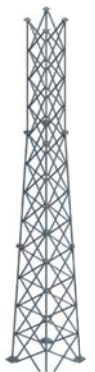
# Rail | Traction

Rail & Traction products are developed to provide lighting and small power applications in harsh environments such as rail tunnels and bridge environments. We offer a wide ranging and varied portfolio including innovative installation solutions, like Prysmian's Connecta System, Flexo Rail Products and Modular Power Systems and more.



# Telecommunications

Technical solutions and innovations for the **Telecommunications** industry. Material, strength, weight, function and logistics are some of the main characteristics of the products. For this industry we can offer solutions like Masts & Towers, Rapidly Deployed Units, Rooftop Solutions, Supports, Brackets & Components, Green Solutions and more.



All Enquiries: tel: +44 (0)1744 762 929 | email: [sales@etechcomponents.com](mailto:sales@etechcomponents.com) | web: [www.etechcomponents.com](http://www.etechcomponents.com)

Technical data subject to change without notice - The information is made available on the understanding that E-Tech Components (UK) Ltd and its employees and agents shall have no liability (including liability by reason of negligence) to the users for any loss, damage, cost or expense incurred or arising by reason of any person using or relying on the information and whether caused by reason of any error, negligent act, omission or misrepresentation in the information or otherwise.

# Medium Voltage MV | High Voltage HV | Cable Terminations

Heat shrink, cold shrink, push-on and plug-in type cable terminations and separable connectors suitable for MV-HV cable connections to air and gas insulated switchgear, transformers, motors and overhead lines. Inner and outer cone cable connectors and bushings to suit all interfaces.



# Wind | Renewable Energy

Reliable and accurate **Wind & Renewable Energy** products for your energy wind project. Economic, durable and competitive solutions that remain standing in all climates and terrains. Our range of Wind products include Guyed Mast Systems, Beams, Top Spires, Foundations, Guy Anchors and Wind Accessories. Elpress provides solutions for the wind turbine tower, rotor blade, engine room and control system. All applications are approved according to standards such as IEC and UL.



All Enquiries: tel: +44 (0)1744 762 929 | email: [sales@etechcomponents.com](mailto:sales@etechcomponents.com) | web: [www.etechcomponents.com](http://www.etechcomponents.com)

Technical data subject to change without notice! - The information is made available on the understanding that E-Tech Components (UK) Ltd and its employees and agents shall have no liability (including liability by reason of negligence) to the users for any loss, damage, cost or expense incurred or arising by reason of any person using or relying on the information and whether caused by reason of any error, negligent act, omission or misrepresentation in the information or otherwise.

# PANDUIT®

## Panduit® Pan-Steel® Stainless Steel Systems

Meet and exceed the most stringent industry standards

Panduit harsh environment solutions include the Pan-Steel® System, power and grounding connectors, identification and safety, abrasion protection, heat shrink, wiring duct, industrial ethernet, and cable tie solutions. These solutions feature Panduit world-class quality, rigorously tested to deliver the highest performance, and lowest total cost of ownership.



**WE SUPPLY THE COMPLETE RANGE!**

**CONTACT US:**

**t: +44 (0)1744 762 929**

**e: [sales@etechcomponents.com](mailto:sales@etechcomponents.com)**

## Cable Ties | Nylon Ties | Stainless Steel Ties

Nylon Cable Ties, Coloured Packs, Releasable, Push Mounted, Wing Mounted, Screw Mounted, Double loop, Stainless Steel Ties, Bases.



## Tapes | PVC Tapes | Self Amalgamating | Specialist Tapes

PVC Insulation, Aluminium Foil, Masking, PTFE, Gaffer/Duct, Double Sided Foam, Self Amalgamating, Anti Slip Tape.



## Heat Shrink | Sleeving | Conduit

Non Split & Split Conduit, Braided Expandable Sleeving, Electrical PVC Sleeving, Heat Shrink Tubing, Mini Reels Colour & Black, Mixed Packs.

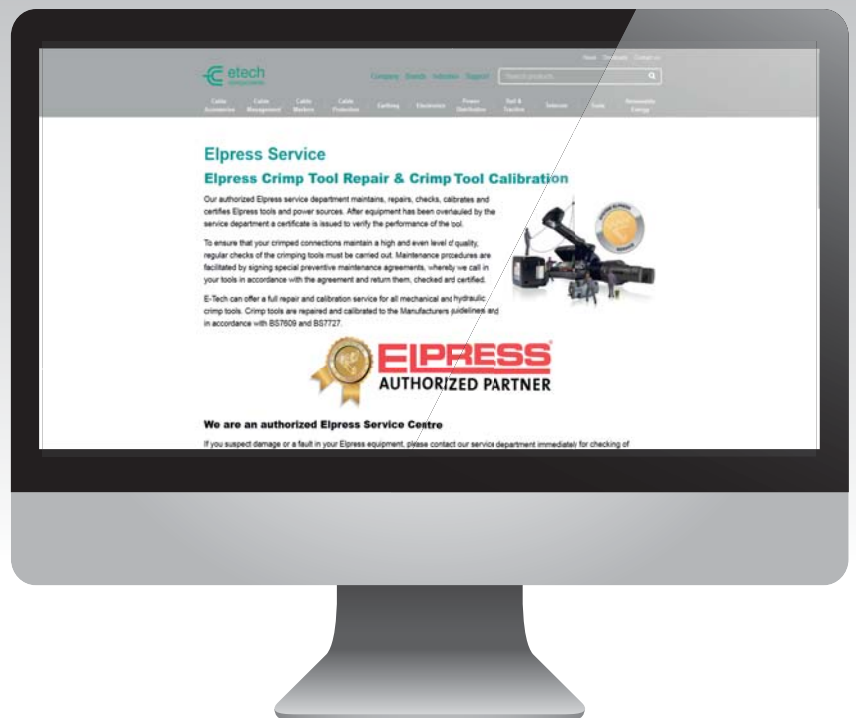




# TOOL REPAIR & CALIBRATION

We offer a full Servicing/Repair/Calibration service of all mechanical & hydraulic tooling.

- Preventative Maintenance
- Repair
- Service
- Calibration



For more info visit: [www.etchcomponents.com/service](http://www.etchcomponents.com/service)



**AUTHORISED  
SERVICE  
PARTNER**



**ELPRESS®**

**BICON**

**BICC**

**Prysmian  
Group**

**Klauke®**

**GREENLEE.**

**Cembre**

**BURNDY®**

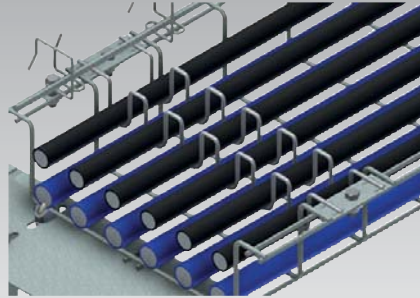
**SWA**

**XX PARTEX  
MARKING SYSTEMS**

# Data Centres

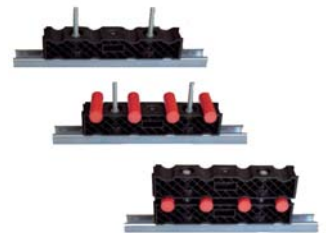
E-Tech Components hold stock of a vast range of power cable components, equipment and solutions for Data Centres.

Solutions available include Cable Glands, Cleats, Separable Connectors, Terminations, Cable Management Solutions, Labelling and Earthing Products from Leading Industry Manufacturers brands such as Elpress, Prysmian Group, Erico nVent Caddy, Dutchclamp, Silver Fox and more.



## Components & Solutions for Data Centres

The key components of a data centre design include routers, switches, firewalls, storage systems, servers, and application-delivery controllers. Power subsystems, uninterruptible power supplies (UPS), ventilation, cooling systems, fire suppression, backup generators, and connections to external networks are components and solutions critical for the data centre as well.

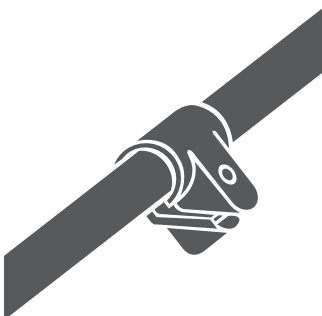


**CABLE MANAGEMENT**

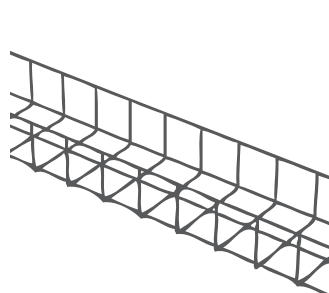
**CABLE PROTECTION**

**CABLE LABELLING**

**CABLE RACKING**



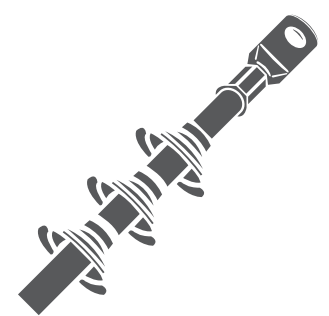
**CABLE CLEATS**



**CABLE TRAY**



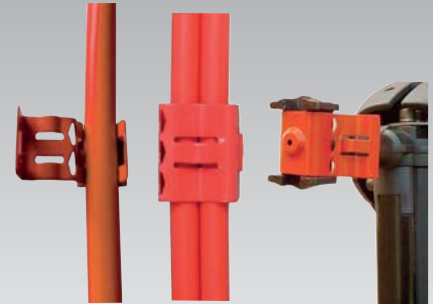
**CABLE JOINTS**



**TERMINATIONS**

**FREE Technical Advisory Service**

E-Tech Components UK Ltd maintains a free technical advisory service. Contact us about any questions, enquiries or requests you may have: +44 (0) 1744 762 929



The above-mentioned along with the centre's hardware and software, require significant infrastructure to support. Some of the solutions we offer for that include Cable Glands, Cleats, Separable Connectors, Terminations, Cable Management Solutions, Labelling and Earthing Products:



**FP CABLE  
FIXINGS**



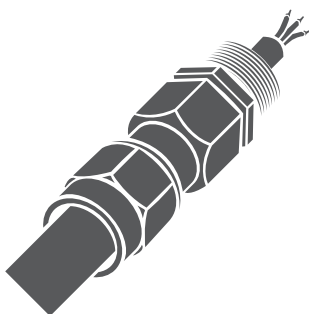
**CABLE  
TIES**



**TRAILING  
CABLE**



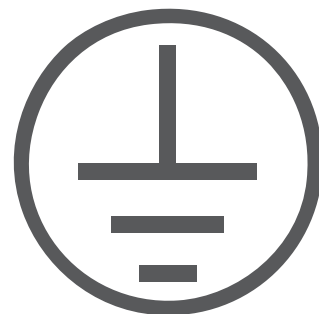
**FIRE RESISTANT  
FIXINGS**



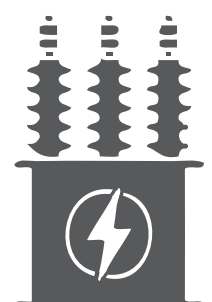
**CABLE  
COMPONENTS**



**TOOLING**



**EARTHING**



**TRANSFORMER  
& SWITCHGEAR**

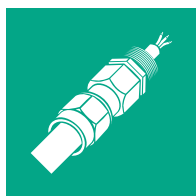
## Mission

E-Tech Components are a Specialist Distributor of Electrical Cable Accessories and offer high quality, innovative and unique products and solutions that can save time, cost and improve quality and ensure compliance to industry standards and regulations.

We support our customers by offering full technical support including design and certified training across our range of products and disciplines and in-house Tool Repair and Calibration facilities that make us unique in the electrical industry.

## Industries

E-Tech Components UK Ltd are active and have expertise across diverse markets where high quality is vital including Telecommunications, Wind & Renewable Energy, Rail & Traction, Oil & Gas, Nuclear Power Plants and Major construction projects throughout the UK and Worldwide. More specifically, we supply products in almost all areas of industry including such demanding areas as:



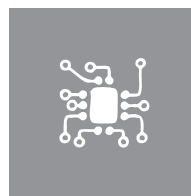
Cable Components



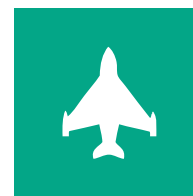
Construction



Earthing & Protection



Electronics



Military & Defence



Nuclear



Oil & Gas



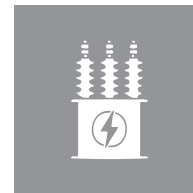
Rail & Traction



Telecoms



Tooling



Transformer & Switchgear



Wind & Renewables



## 20 YEARS OF EXCELLENCE



E-Tech Components – The Specialist Distributor of High Quality Cable Accessories.

For nearly 20 years E-Tech Components have been offering our range of major brands of Cable Accessories ensuring access to high quality products, technical support and stock availability.

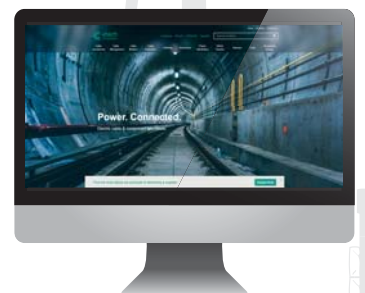
E-Tech offer expertise and support across a range of Cable Accessories enabling you to ensure compliance to latest standards and new Wiring Regulations ( BS 7671:2018 18th Edition) including IEC 61238, BS7609, BS7727, IEC 62444, BS6121-1:2005 , IEC 61914 & BS EN 50393.

Please contact our Sales Team for more information on:

+44 (0)1744 762 929

+44 (0)1744 762 930

sales@etechcomponents.com



Visit our website: [www.etechcomponents.com](http://www.etechcomponents.com)